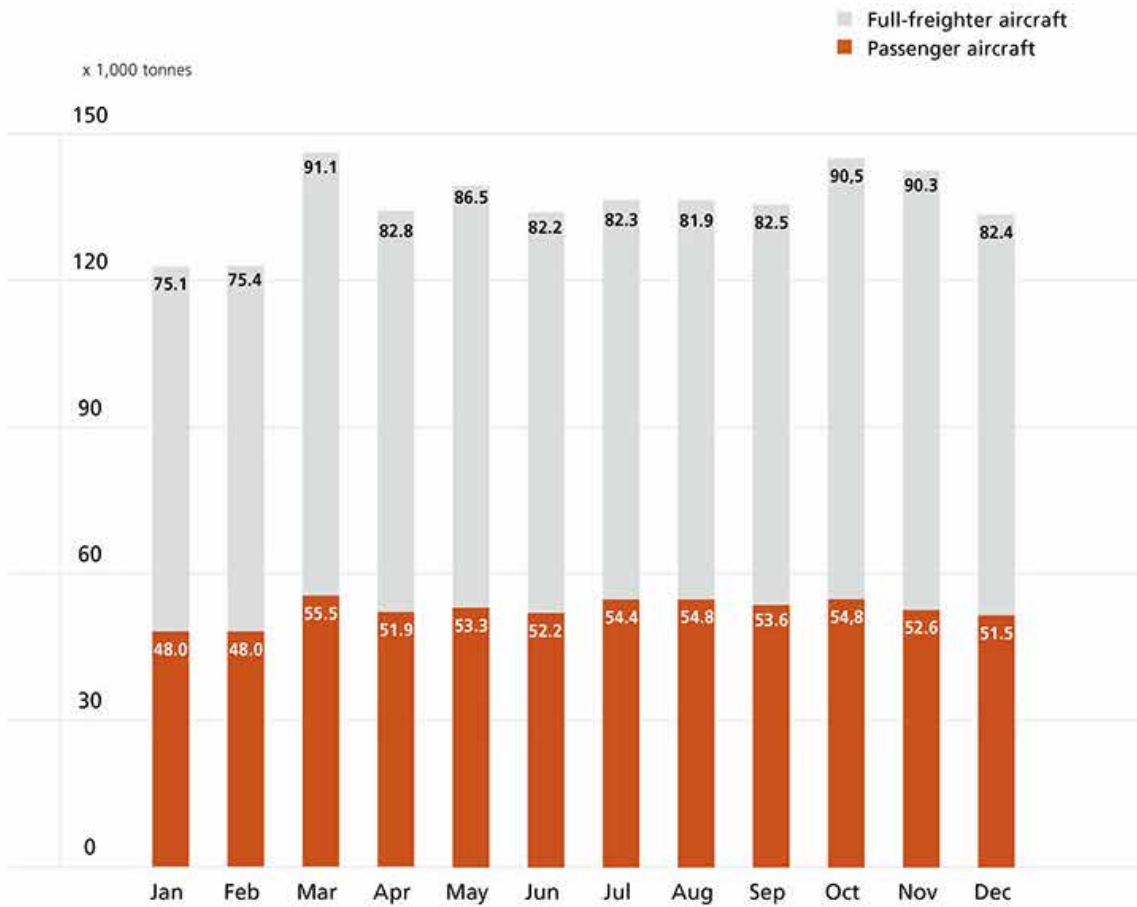




Cargo transport experienced a growth at Amsterdam Airport Schiphol. In 2014 a rise was recorded of +6.7% with cargo totalling over 1.6 million tonnes. The highest volume of cargo ever at Schiphol. Cargo transported on full-freighter services showed an increase of +8.3% and cargo transported on passenger service flights grew +4.2%.

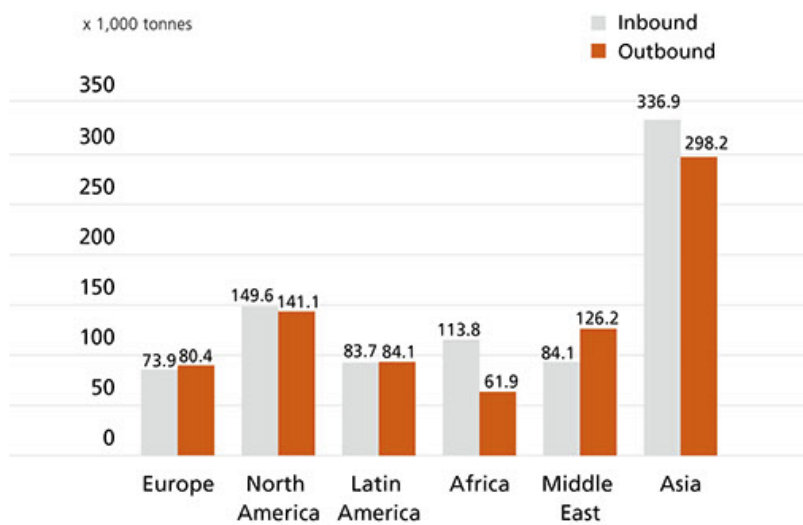
The Far-East remains the region with the most dense cargo traffic flow to and from Amsterdam Airport Schiphol: 634 thousand tonnes in 2014, representing a growth of +5.5%. Cargo traffic on North America, the second most dense traffic flow to/from Amsterdam Airport Schiphol, increased by +14.2% in 2014. Latin-America, the only region with a lower cargo volume than the year before, showed a decline in volume of -2.0%. The busiest month in 2014 was March, with over 146 thousand tonnes of cargo.

Monthly totals per aircraft type



Annual totals by continent

Annual totals 2013



Total air transport

	2014	Compared to 2013 in %
<b>Total</b>	<b>1,633.2</b>	<b>6.7%</b>
Passenger services	630.4	4.2%
Full-freighter services	1002.8	8.3%
Inbound	841.3	8.6%
Outbound	791.9	4.7%

↓ Cargo, main origins and destinations

Ranking	(2013 ranking)	Airport	IATA code	2014 in tonnes	Compared to 2013 in %
1	(1)	Shanghai	PVG	187,391	11.7%
2	(2)	Nairobi	NBO	90,143	4.0%
3	(4)	Moscow	SVO	63,032	16.1%
4	(3)	Hong Kong	HKG	57,023	- 0.4%
5	(8)	Doha	DOH	50,379	21.4%
6	(5)	Singapore	SIN	49,484	- 1.4%
7	(7)	Chicago	ORD	49,287	12.7%
8	(9)	Miami	MIA	43,799	8.2%
9	(11)	Seoul	ICN	41,128	7.4%
10	(10)	Tokyo	NRT	39,022	- 0.1%
11	(17)	Jeddah	JED	36,534	28.8%
12	(20)	New York	JFK	36,498	44.6%
13	(13)	Guangzhou	CAN	36,393	7.4%
14	(6)	Dubai	DXB	34,122	- 28.0%
15	(14)	Quito	UIO	34,055	1.0%
16	(15)	Abu Dhabi	AUH	32,922	13.2%
17	(19)	Houston	IAH	32,827	23.1%
18	(12)	Kuala Lumpur	KUL	31,871	- 9.7%
19	(16)	Johannesburg	JNB	30,474	6.6%
20	(21)	Bangkok	BKK	27,478	15.2%

↓ Annual totals by aircraft type

